

STIRLING TUITION
SEAG
Entrance Assessment



STIRLING TUITION
WWW.STIRLINGTUITION.COM

Practice Paper 6

(Cut Answer Sheet from Back Page)

English – Practice Test

In this question there is either **one** punctuation mistake or **no** punctuation mistake. Find the group of words with the mistake in it and mark its letter on your answer sheet. **If there is no mistake, mark N.**

P1 My favourite flavour of ice cream is strawberry but I also like vanilla, chocolate and cherry.

A B C D

Handwritten: Comma (circled) with an arrow pointing to the comma between 'vanilla' and 'chocolate'. The letter 'D' is circled below the word 'chocolate'.

In this question you have to choose the **best** word to complete the sentence, so that it makes sense and is written in correct English. Choose the **best** answer and mark its letter on your answer sheet.

P2 Every night, at 6 o'clock, my granny watches

the an a this some BBC news.

A B C D E

In this question there is either **one** spelling mistake or **no** spelling mistake. Find the group of words with the mistake in it and mark its letter on your answer sheet. **If there is no mistake, mark N.**

P3 The Natural History Museum in London has an interesting colection of dinosaur bones.

A B C D

Handwritten: collection (circled) with an arrow pointing to the underlined word 'colection'. The letter 'C' is circled below the word 'colection'.

Read this passage to yourself.

From The Fir Tree by Hans Christian Andersen

The servants, as well as the young ladies, decorated it. On one branch there hung little nets cut out of coloured paper, and each net was filled with sugarplums; and among the other boughs gilded apples and walnuts were suspended, looking as though they had grown there, and little blue and white tapers were placed among the leaves. Dolls that looked for all the world like men—the Tree had never beheld such before—were seen among the foliage, and at the very top a large star of gold tinsel was fixed. It was really splendid—beyond description splendid. (PS)

'This evening!' they all said. 'How it will shine this evening!'

Answer this question. Choose **one** answer from the options below and mark its letter on your answer sheet.

P4

Which of the following is true about the decorations on the tree?

- A The tree is decorated with nets, foliage, sweets, tinsel and blue and white paper.
- B The tree is decorated with fruit, nuts, candles, dolls and a star.
- C The tree is decorated with leaves, flowers, berries, little men and tinsel.
- D The tree is decorated with paper hats, lights, sugar, a fairy and blue and white tinsel.
- E The tree is decorated with blue and white paper chains, silver tinsel and gold candles.

For this question, you have to **write your answer** in the box provided on your answer sheet (box P5).

P5

Which **one word** from the passage means the same as "excellent"?

Splendid



Maths – Practice Test

P6



The school has a production of Joseph, however, only $\frac{3}{7}$ of Mr Stirling's year group of 63 are going to audition.

How many children in the year group are not going to audition for the school play?

$$\frac{\times 4}{\div 7} \text{ of } 63 =$$

A 18

B 42

C 36

D 27

E 21

$$63 \div 7 = 9$$
$$9 \times 4 = 36$$

P7

Look at the statement below.

$$A \times 62 = 248$$

What is the value of A?

$$62 \overline{) 248} \begin{array}{r} 4 \end{array}$$

$$\begin{array}{r} 62 \\ \times 4 \\ \hline 248 \end{array}$$

A 6

B 15376

C 5

D 24862

E 4

P8

$$\begin{array}{r}
 \pounds 3 \\
 + 1.63 \\
 2.67 \\
 + 1.44 \\
 + 1.66 \\
 3.02 \\
 + 0.98 \\
 \hline
 \pounds 11.40
 \end{array}$$

Each week Barney saves some of his pocket money to buy an Xbox game which costs £18.99. Below are the amounts he saved over six weeks.

£1.63

£2.67

£1.44

£1.66

£3.02

£0.98

$$\begin{array}{r}
 18.99 \\
 - 11.40 \\
 \hline
 \pounds 07.59
 \end{array}$$

At the end of the six weeks, how much money does he need to add to his savings to buy the Xbox game?

A £7.59

B £6.23

C £8.04

D £2.29

E £5.68

For these questions you have to **write your answers** in the boxes provided on your answer sheet (box P9 and P10). The units of measurement have been given.

P9

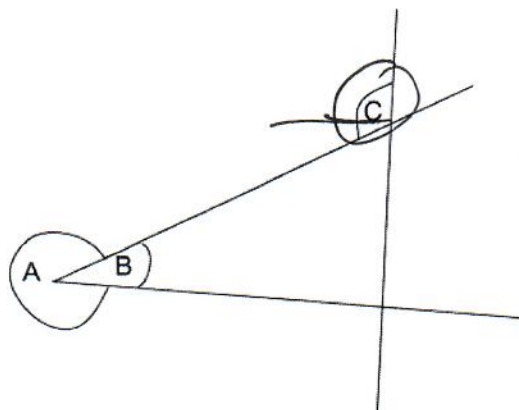
What is a $\frac{1}{2}$ added to $\frac{3}{10}$ as a percentage?

$$\begin{array}{c}
 \downarrow \qquad \qquad \downarrow \\
 50\% + 30\% = 80\%
 \end{array}$$

80%

P10

Look at the shape below. Within the shape there are different types of different angles.



obtuse = $90^\circ - 180^\circ$

Which of the letters above represents an obtuse angle?

C



English – Main Test

In this exercise there are some mistakes with **punctuation** or use of **capital letters**. On each numbered line there is either **one** mistake or **no** mistake. Find the group of words with the mistake in it and **mark its letter on your answer sheet**. If there is no mistake, mark **N**.

Punctuation Exercise

1 My sister moved to New Zealand last year. She lives in a city called Wellington. Capital letter

↑ A ↑↑ B ↑↑ C ↑↑ D ↑

2 "It's good to see you again," said Jade. "I've missed you since you moved house."

↑ A ↑↑ B ↑↑ C ↑↑ D ↑

apostrophe for contraction

3 My granny – who is quite old – often needs help with jobs around the house.

↑ A ↑↑ B ↑↑ C ↑↑ D ↑

dash to close extra info

4 Our school is having a Christmas Fair this Saturday to raise funds for local charities.

↑ A ↑↑ B ↑↑ C ↑↑ D ↑

5 "Why are you back so early?" I said. "I thought that you wouldn't be home until midnight."

↑ A ↑↑ B ↑↑ C ↑↑ D ↑

missing speech marks N

In this exercise you have to choose the **best** word, or **group of words**, to complete each numbered line so that the passage makes sense and is written in correct English. Choose the best answer and **mark its letter on your answer sheet**.

Grammar Exercise

6

I have no idea conclusion imagine knowledge feeling
A B C D E

what the teacher was talking about.

7

Our pets rely on us to feed they their themselves them it
A B C D E

every day.

8

I live in Northern Ireland, but my family are originally

to at around in from England.
A B C D E

9

Stop shouting at me or and yet but if
A B C D E

you'll be sorry!

10

After wait waited waiting was waiting has waited
A B C D E

for his friends for over an hour, Joel decided to go home.

In this exercise there are some **spelling** mistakes. On each numbered line there is either **one** mistake or **no** mistake. Find the group of words with the mistake in it and **mark its letter on your answer sheet**. If there is no mistake, mark **N**.

Spelling Exercise

11 After looking at all the options, I have decided to go to France on holiday this year.
↑ A ↑↑ B ↑↑ C ↑↑ D ↑

12 I don't really understand science but I think that the experiments are very intresting.
↑ A ↑↑ B ↑↑ C ↑↑ D ↑

13 If you don't like long queues then you should buy a fast-track ticket at the theme park.
↑ A ↑↑ B ↑↑ C ↑↑ D ↑

14 It is best to visit Hong Kong in autumn when the weather is cooler and more comfortable.
↑ A ↑↑ B ↑↑ C ↑↑ D ↑

15 Before you join the cookery class you must buy your equipment and learn the safety rules.
↑ A ↑↑ B ↑↑ C ↑↑ D ↑

Read the **whole** passage carefully, then answer the questions that follow.

Extract from The Fir Tree by Hans Christian Anderson

1. Out in the woods stood a nice little Fir Tree. The place he had was a very good one: the
2. sun shone on him: as to fresh air, there was enough of that, and round him grew many
3. large-sized comrades, pines as well as firs. But the little Fir wanted so very much to be a
4. grown-up tree.
5. He did not think of the warm sun and of the fresh air; he did not care for the little cottage
6. children that ran about and prattled when they were in the woods looking for wild
7. strawberries. The children often came with a whole pitcher full of berries, or a long row
8. of them threaded on a straw, and sat down near the young tree and said, 'Oh, how pretty
9. he is! What a nice little fir!' But this was what the Tree could not bear to hear.
10. At the end of a year he had shot up a good deal, and after another year he was another
11. long bit taller; for with fir trees one can always tell by the shoots how many years old
12. they are.
13. 'Oh! Were I but such a high tree as the others are,' sighed he. 'Then I should be able to
14. spread out my branches, and with the tops to look into the wide world! Then would the
15. birds build nests among my branches: and when there was a breeze, I could bend with as
16. much stateliness as the others!'
17. Neither the sunbeams, nor the birds, nor the red clouds which morning and evening sailed
18. above him, gave the Tree any pleasure.
19. In winter, when the snow lay glittering on the ground, a hare would often come leaping
20. along, and jump right over the little Tree. Oh, that made him so angry! But two winters
21. were past, and in the third the Tree was so large that the hare was obliged to go round it.
22. 'To grow and grow, to get older and be tall,' thought the Tree—'that, after all, is the most
23. delightful thing in the world!'
24. In autumn the wood-cutters always came and felled some of the largest trees. This
25. happened every year; and the young Fir Tree, that had now grown to a very comely size,
26. trembled at the sight; for the magnificent great trees fell to the earth with noise and
27. cracking, the branches were lopped off, and the trees looked long and bare; they were
28. hardly to be recognised; and then they were laid in carts, and the horses dragged them out
29. of the wood.

30. Where did they go to? What became of them?

31. In spring, when the swallows and the storks came, the Tree asked them, 'Don't you know
32. where they have been taken? Have you not met them anywhere?'

33. The swallows did not know anything about it; but the Stork looked musing, nodded his
34. head, and said, 'Yes; I think I know; I met many ships as I was flying hither from Egypt; ⁽²¹⁾
35. on the ships were magnificent masts, and I venture to assert that it was they that smelt so
36. of fir. I may congratulate you, for they lifted themselves on high most majestically!'

37. 'Oh, were I but old enough to fly across the sea! But how does the sea look in reality?
38. What is it like?'

39. 'That would take a long time to explain,' said the Stork, and with these words off he
40. went.

41. 'Rejoice in thy growth!' said the Sunbeams. 'Rejoice in thy vigorous growth, and in the
42. fresh life that moveth within thee!' And the Wind kissed the Tree, and the Dew wept ²⁶
43. tears over him; but the Fir understood it not. ⁽²²⁾

Please answer these questions. (Look at the passage again if you need to.) You should choose the **best** answer and mark its letter on your answer sheet.

16

Look at lines 1-4. What does the description suggest about the place where the little Fir is growing?

- A It is hot and windy.
- B It is dark and spooky.
- C It is wild and overgrown.
- D It is the perfect place for trees to grow.
- E It is hot and dusty.

17

“he had shot up a good deal” (line 10)
What does this suggest about the Tree?

- A The Tree has got smaller.
- B The Tree has got taller.
- C The Tree has got wider.
- D The Tree has not grown at all.
- E The Tree has got more branches.

18

“.....to look into the wide world!” (line 14)
What literary technique is being used in this line?

- A metaphor
- B personification
- C alliteration
- D onomatopoeia
- E simile

19

Look at lines 13 - 18. What does this suggest about how the Tree is feeling?

- A He is lonely.
- B He is happy.
- C He is angry.
- D He is hopeful.
- E He is dissatisfied.

20

Look at lines 19 – 23. Why does the Tree get angry?

- A The hare jumping over him reminds him that he is small
- B The Tree doesn't like winter.
- C The hare damages the Tree when it jumps over him.
- D The hare is being rude and inconsiderate.
- E The Tree doesn't like hares.

21

Look at lines 31-36. Why does the Tree ask the birds where the other trees have gone?

- A The birds are extremely intelligent.
- B The birds know everything about trees.
- C The birds fly all over the world and can see many things.
- D The birds travel on the ships with the other trees.
- E The birds live in the other trees.

22

Look at lines 41 – 43. What does this suggest about the Tree?

- A The Tree is being rude to the Sunbeams, the Wind and the Dew.
- B The Tree can't see that the Sunbeams, the Wind and the Dew are helping him to grow.
- C The Tree is unintelligent.
- D The Tree cannot hear the Sunbeams, the Wind and the Dew.
- E The Tree doesn't understand what the Sunbeams, the Wind and the Dew are saying.

For these questions you have to **write your answers**, neatly, in the boxes provided on your answer sheet.

23

Look at lines 5 – 12. According to the passage, how can you tell the age of a fir tree?

Looking at the shoots

24

In which season are the fir trees cut down?

Autumn

25

Which word in line 18 means the same as "happiness"?

pleasure

26

Which word in line 42 means the same as "cried"?

Wept

27

Which part of speech is "bear" as it appears in the passage? (line 9)

verb

28

Which one part of speech are the following as they appear in the passage?

round (line 2) of (line 5) for (line 5) about (line 6)

prepositions

Maths – Main Test

29

What is the number that needs to be inserted below to make the statement true?

12 is _____ % of 30

$$\frac{12}{30} = \frac{4}{10} = \frac{40}{100} = 40\%$$

A 25%

B 40%

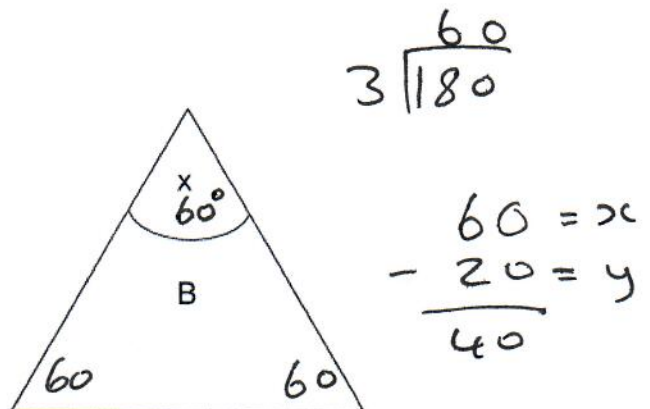
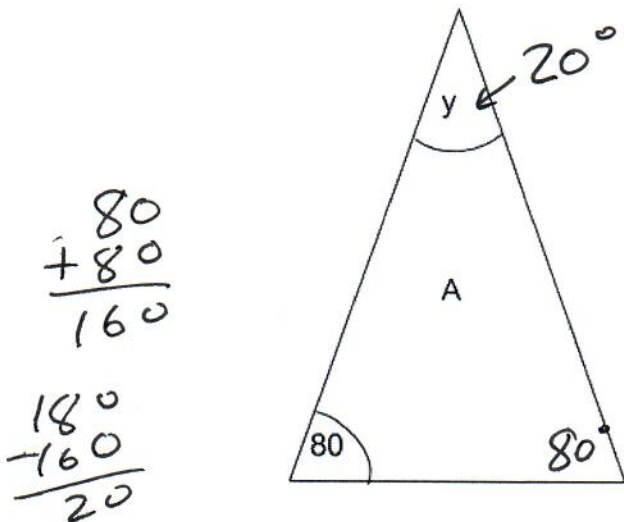
C 30%

D 35%

E 45%

30

Below are two triangles. An isosceles triangle (A) and an equilateral triangle (B).



How much bigger is angle x than angle y?

A 60°

B 20°

C 50°

D 80°

E 40°

31



$$\begin{array}{r} 5 \\ 6.20 \\ - 2.90 \\ \hline 3.30 \end{array}$$

Mr. Stirling's class collects money each week for charity. Here are the amounts collected over five weeks.

£2.90

£6.20

£4.50

£5.10

£3.70

What is the range of money collected by Mr. Stirling's class?

A £3.30

B £2.65

C £4.48

D £2.20

E £4.30

32

A number is missing from the statement below.

If $27 \div A = 5$ then $54 \div A = 10$

(Handwritten annotations: a circle around the 5 in the first equation, an arrow from the 5 to the 10 in the second equation labeled 'x2', and an arrow from the 27 to the 54 in the second equation labeled 'x2')

What is the number that correctly completes the statement above?

A 9

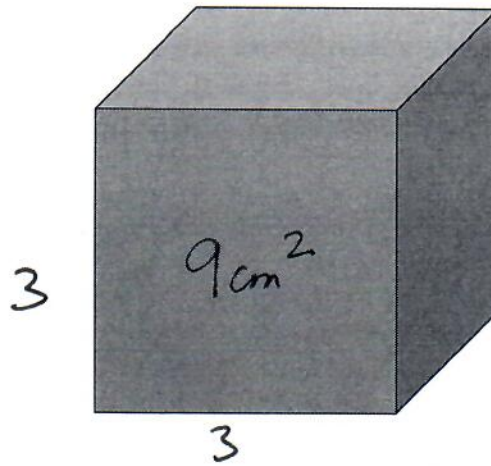
B 2

C 10

D 3

E 2.5

33



$$\begin{array}{r} 9 \text{ cm}^2 \\ \times 6 \text{ faces} \\ \hline 54 \text{ cm}^2 \end{array}$$

Each edge of a cube has a length of 3 cm.

What is the total surface area of the cube?

- A 9 cm^2 B 81 cm^2 C 27 cm^2 **D 54 cm^2** E 36 cm^2

34

A train leaves Belfast at 14:21 and arrives in Bangor at 15:07.

How long does the journey from Belfast to Bangor take in minutes?

$$\begin{array}{r} 07 \\ - 14:21 \\ \hline 00:46 \end{array}$$

- A 48 B 86 C 28 **D 46** E 21

35

In a shop, Clare buys:

$$\begin{array}{l} 18 \text{ apples at } 10\text{p each} = 18 \times 10 = \pounds 1.80 \\ 14 \text{ bananas at } 20\text{p each} = 14 \times 20 = \pounds 2.80 \\ 11 \text{ oranges at } 15\text{p each} = 11 \times 15 = \pounds 1.65 \\ \hline \pounds 6.25 \end{array}$$

$$\begin{array}{r} 14 \\ \times 20 \\ \hline 280 \end{array} \qquad \begin{array}{r} 15 \\ \times 11 \\ \hline 15 \\ 150 \\ \hline 165 \end{array}$$

What is the total that Clare will pay?

- A $\pounds 5.45$ B $\pounds 4.65$ C $\pounds 7.10$ D $\pounds 11.18$ **E $\pounds 6.25$**

36

On Wednesday the temperature in Poland is -13°C and the temperature in Belfast is 11°C .

How much higher is the temperature in Belfast than in Poland?

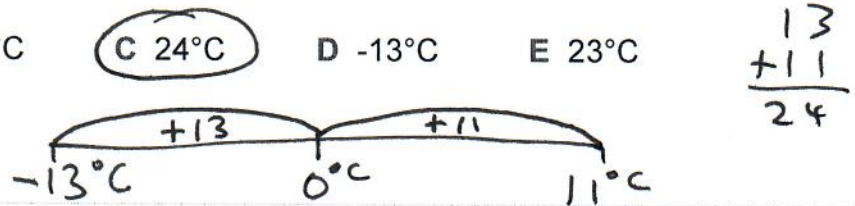
A 2°C

B -2°C

C 24°C

D -13°C

E 23°C



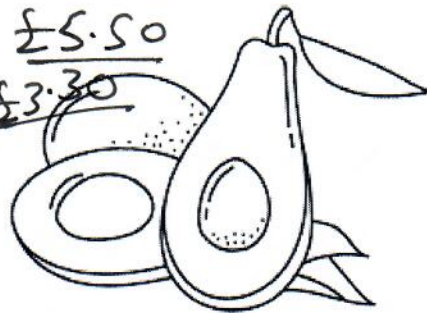
37

One avocado normally costs $\pounds 1.10$. A special offer lets you buy 5 for the price of 3.

$$5 = 5 \times \pounds 1.10 = \pounds 5.50$$

$$3 = 3 \times \pounds 1.10 = \pounds 3.30$$

$$\begin{array}{r} 5.50 \\ - 3.30 \\ \hline \pounds 2.20 \end{array}$$



How much cheaper are the five avocados in the special offer compared with five avocados at the normal price?

A $\pounds 3.30$

B $\pounds 2.20$

C $\pounds 1.10$

D $\pounds 4.40$

E $\pounds 5.50$

38

What is 4291 millimetres in meters?

$$1\text{m} = 1000\text{mm}$$

$$4.291 \div 1000 =$$

A 4.291m

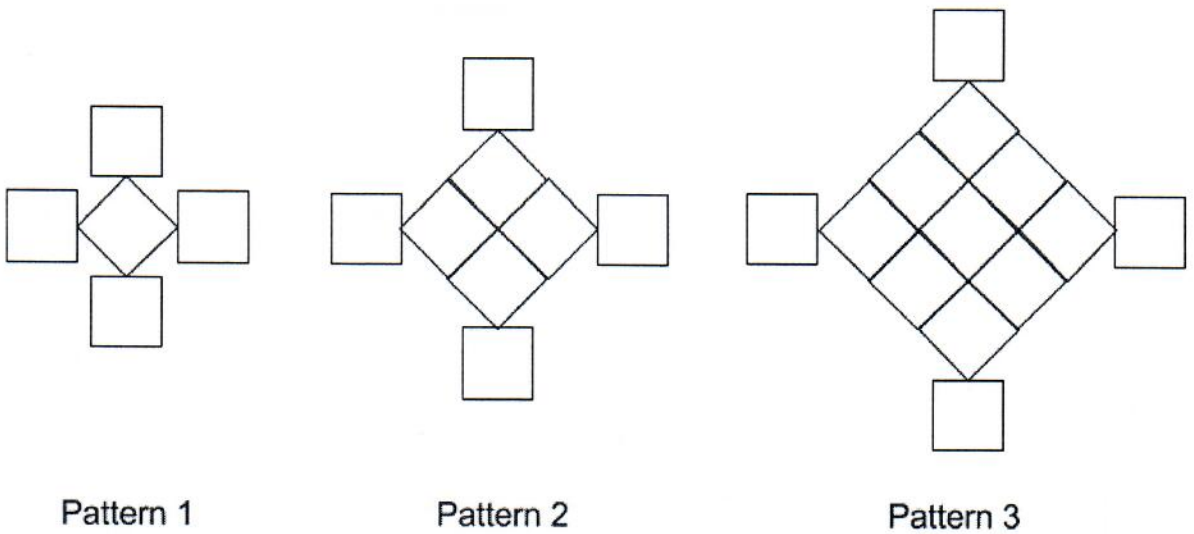
B 42.91m

C 429.1m

D 4291m

E 0.4291m

Look at the sequence of 3 patterns below. Each pattern is made up of small squares.



What pattern number would have 148 squares?

- A 15
- B 8
- C 10
- D 18
- E 12**

1	2	3	4	5	6	7	8	9	10	11	12
5	8	13	20	29	40	53	68	85	104	125	148
	↘	↘	↘	↘	↘	↘	↘	↘	↘	↘	↘
	+3	+5	+7	+9	+11	+13	+15	+17	+19	+21	+23

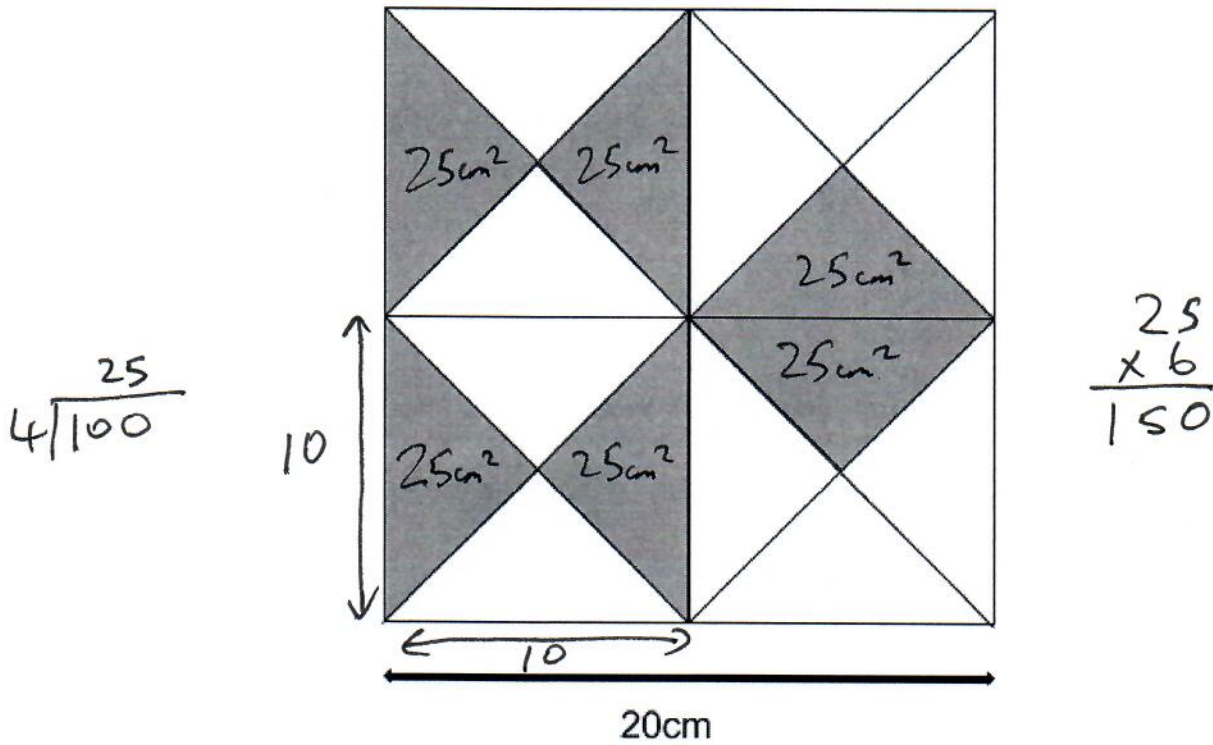
or
square numbers + 4

- 1 + 4
- 4 + 4
- 9 + 4
- 16 + 4
- ⋮
- 144 + 4

40

The diagram below shows a square split into 16 equal parts.

Each side of the square measures 20 cm.



What is the area of the shaded area inside the square?

- A 400cm² B 40cm² C 150cm² D 250cm² E 350cm²

41

How many seconds are there in $\frac{1}{3}$ of an hour?

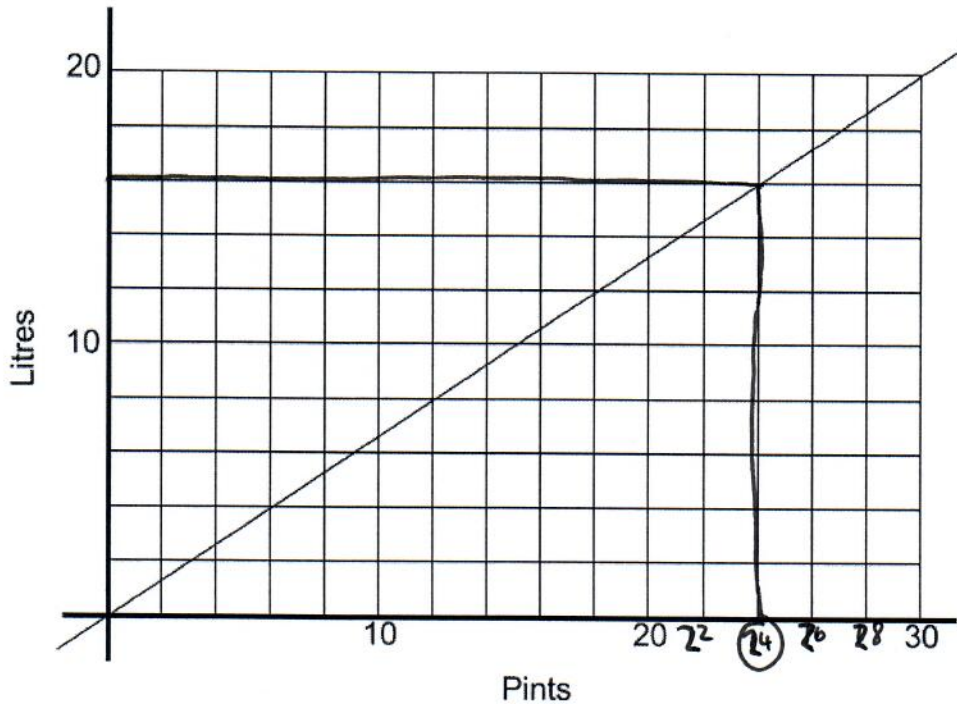
$\frac{1}{3}$ of 60 = 20

- A 20 B 60 C 120 D 1200 E 1800

$$\begin{array}{r} 60 \\ \times 20 \\ \hline 1200 \end{array}$$

42

Jen's graph can be used to convert between pints and litres.



Using her graph, what is the conversion of 16 litres to pints?

A 25

B 24

C 11

D 30

E 10

43

A map has the following scale: 2 centimetres represents 7 kilometres.

A farm is 63 kilometres from a mountain top.

How far apart are they on the map?

A 70cm

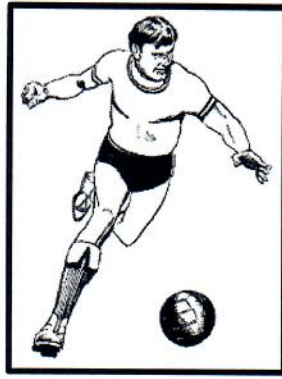
B 9cm

C 72cm

D 7.5cm

E 18cm

$$\begin{array}{ccc}
 & \text{cm} & \text{km} \\
 \times 9 \left(\begin{array}{l} 2 : 7 \\ \hline 18 : 63 \end{array} \right) \times 9
 \end{array}$$



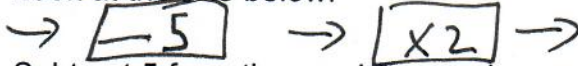
Sam is starting a new business venture in school selling football cards. He has 347 cards and he is hoping to sell them for 30p each.

If he sells all the cards how much money will he make in total?

- A £104.10
- B £117.30
- C £96.20
- D £74.90
- E £111.80

$$\begin{array}{r}
 ^1 ^2 \\
 3.47 \\
 \times 30 \\
 \hline
 \pounds 104.10
 \end{array}$$

Look at the rule below:



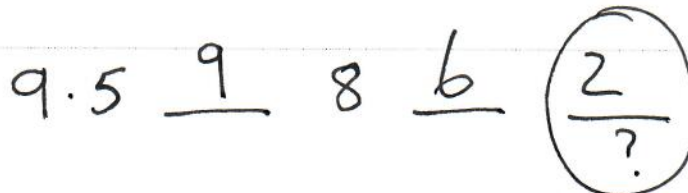
Subtract 5 from the previous number and then multiply by 2.

John uses this rule to write a sequence of 5 numbers. The first number John writes is 9.5. The third number he writes is 8.

What is the fifth number John writes in the sequence?

- A 7.5
- B 2.5
- C 2
- D 6
- E 5

$$\begin{array}{r}
 9.5 \\
 -5.0 \\
 \hline
 4.5 \\
 \times 2 \\
 \hline
 9.0
 \end{array}$$



$$\begin{array}{r}
 8-5=3 \\
 \times 2 \\
 \hline
 6 \\
 6-5=1 \\
 \times 2 \\
 \hline
 2
 \end{array}$$

46

Which number is a multiple of 3, 4 and 5?

$$\begin{array}{r} 20 \\ 3 \overline{)60} \end{array}$$

$$\begin{array}{r} 15 \\ 4 \overline{)60} \end{array}$$

$$\begin{array}{r} 12 \\ 5 \overline{)60} \end{array}$$

- A 24 B 30 C 35 **D 60** E 40

47

There are normally 32 people in Ruth's gymnastics lesson. Today only $\frac{3}{4}$ of her gymnastics lesson turn up. Of the people in her gymnastics lesson who turn up, one third arrive late. **24**

How many people in Ruth's gymnastics lesson came late that day?

- A 16 B 10 C 24 D 6 **E 8**

$$\begin{aligned} \frac{3}{4} \text{ of } 32 &= 24 \\ \frac{1}{3} \text{ of } 24 &= 8 \end{aligned}$$

48

Clare had forty three coins in her purse. She had:

three	10p coins	$3 \times 10 = 30$
fourteen	5p coins	$14 \times 5 = 70$
fourteen	2p coins	$14 \times 2 = 28$
twelve	1p coins	$12 \times 1 = 12$

$$\begin{array}{r} 14 \\ \times 5 \\ \hline 70 \end{array}$$

$$\begin{array}{r} 7 \\ 20 \overline{)140} \end{array}$$

At the bank, Clare exchanges these coins for 20p coins.

How many 20p coins did she get?

- A 5 **B 7** C 9 D 8 E 11

49

Zara starts at the number 5 and subtracts 3, four times.

What number does she end up at?

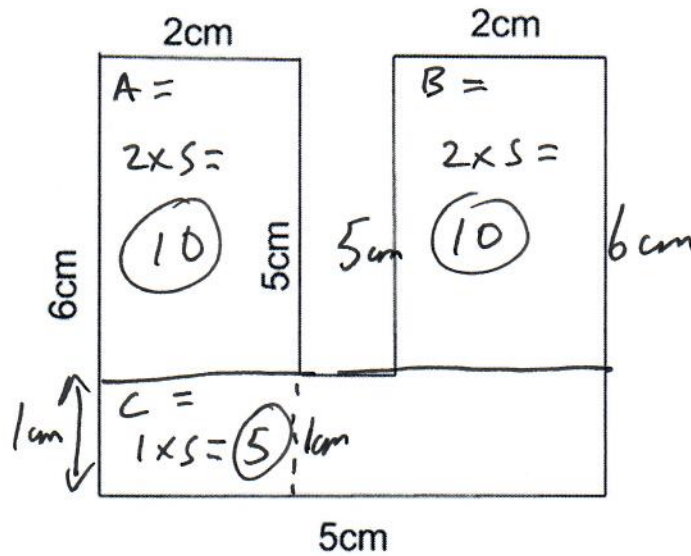
A -7 B -15 C 3 D 5 E -8

-7 -6 -5 -4 -3 -2 -1 0 1 2 3 4 5

(4) (3) (2) (1)

50

Look at the shape below.



$$\begin{array}{r}
 A = 10 \\
 B = 10 \\
 C = + 5 \\
 \hline
 25
 \end{array}$$

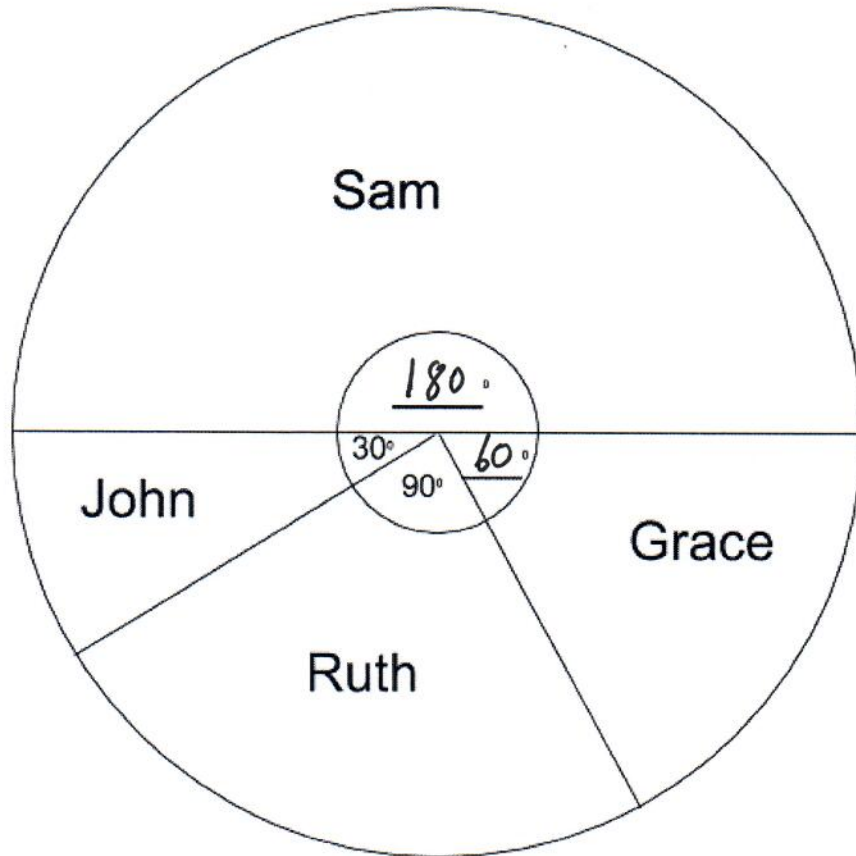
What is the area of the shape above?

- A 29cm²
- B 27cm²
- C 25cm²
- D 32cm²
- E 30cm²

For questions 51–56, you have to **write your answers** in the boxes provided on your answer sheet. The units of measurement have been given.

51

Look at the pie chart below which shows the amount of goals scored by each person on the school netball team.



$$\begin{array}{r} 30 \\ + 90 \\ \hline 120 \\ \\ 180 \\ - 120 \\ \hline 60 \end{array}$$

Around the centre of the pie chart there are two angles missing.

What are the two missing angles?

180° and 60°

52

Look at the pie chart in Q51 above. Sam scored 24 goals in total.

$$\begin{array}{l} 180^\circ = 24 \\ 60^\circ = 8 \end{array} \div 3$$

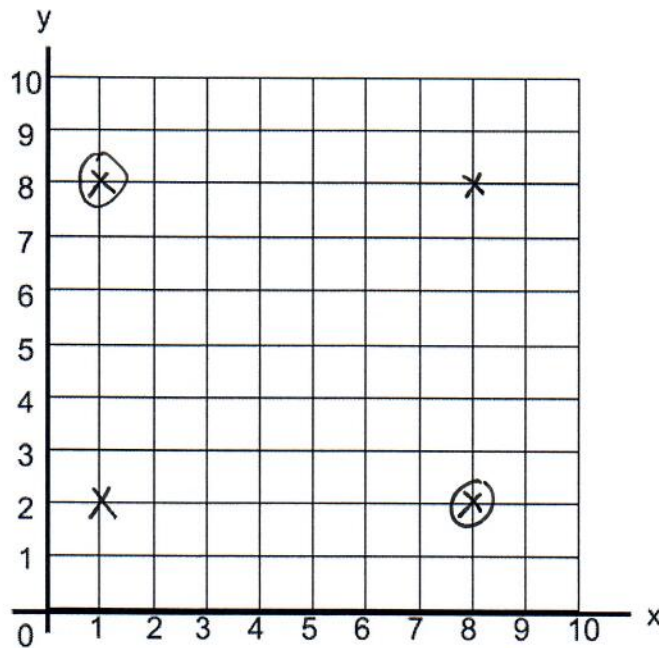
How many goals did Grace score for the school team?

8

53

You may find the grid below useful in solving this question.

Two corners of a right-angled triangle have coordinates (1, 2) and (8, 8).



What could the coordinate of the third corner of the right-angled triangle be?

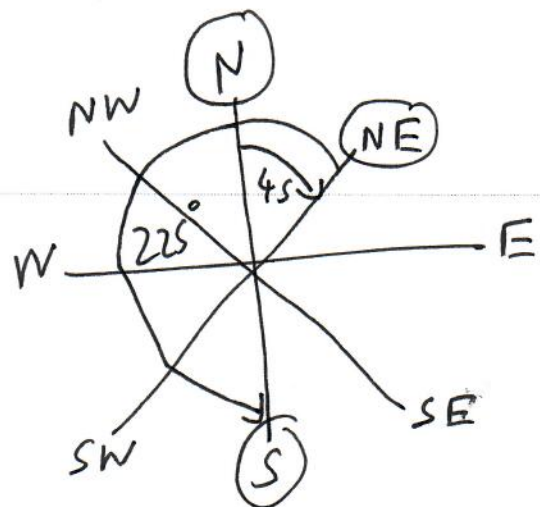
$(1, 8)$ or $(8, 2)$

54

You are facing North. You turn 45° clockwise and then 225° anticlockwise.

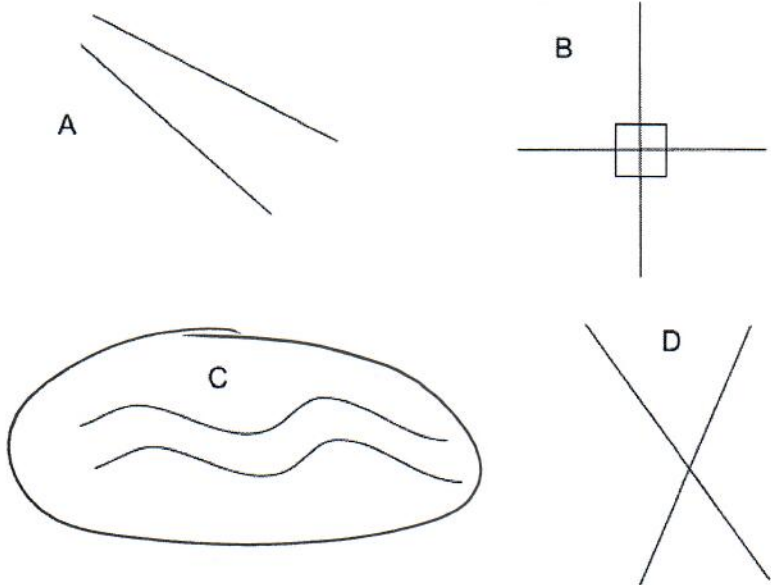
In what direction are you now facing?

South



55

Look at the different lines below.



What letter above represents a set of parallel lines?

C

56

What is six and seven quarters as a decimal number?

6

↓

$$\begin{array}{r}
 0.25 \\
 \times 7 \\
 \hline
 1.75
 \end{array}$$

$$\begin{array}{r}
 6.00 \\
 + 1.75 \\
 \hline
 7.75
 \end{array}$$

7.75