

1

Each day Ruth sleeps for 8 hours. A day is 24 hours.

For what fraction of the day is she asleep?

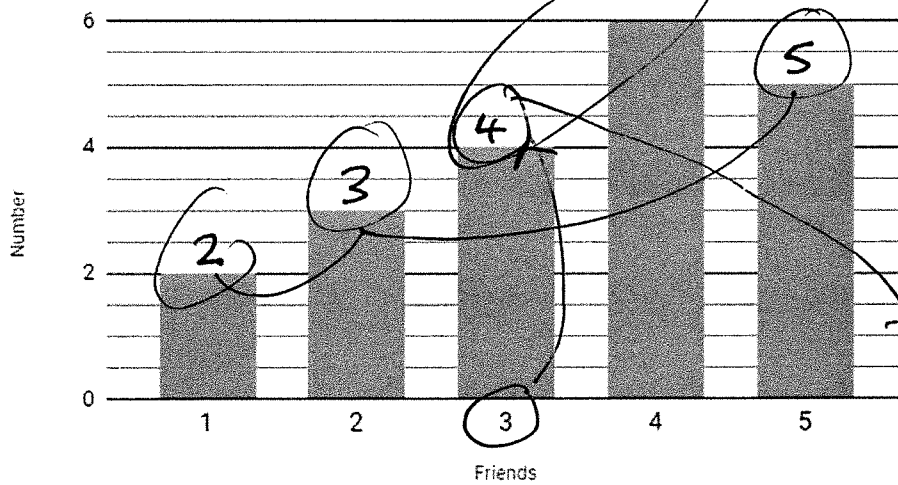
$$\frac{8}{24} = \frac{8 \div 8}{24 \div 8} = \frac{1}{3}$$

- A one third**    B two thirds    C one half    D one quarter    E three quarters

2

A child asks their friends how many days a week they eat vegetables. The bar chart below shows the results.

Number vs. Friends



$$\begin{array}{r} 10 \\ + 10 \\ \hline 20 \end{array}$$

$$\frac{4}{20} = \frac{2}{10}$$

What percentage of the child's friends eat vegetables three times a week?

- A 15%    B 25%    **C 20%**    D 12%    E 40%

20%.

3

A film is on Channel 1. Another film is on Channel 2.

They both finish at the same time. *1 hr 35*

The film on Channel 1 lasted 95 mins and started at 5pm.

The film on Channel 2 lasted 85 mins.

At what time did the film on Channel 2 start?

	Start	End	TT
1	5:00pm	6:35pm	1 hr 35m
2	5:10pm	6:35pm	1 hr 25m

A 5:10pm

B 5:00pm

C 5:20pm

D 4:50pm

E 6:10pm

$$\begin{array}{r} 6:35 \\ - 1:25 \\ \hline 5:10 \end{array}$$

$$\begin{array}{r} 5:00 \\ + 1:35 \\ \hline 6:35 \end{array}$$

4

In a triangle, one of the angles is twice the size of another angle.

The third angle is  $30^\circ$ .

What size is the largest angle?

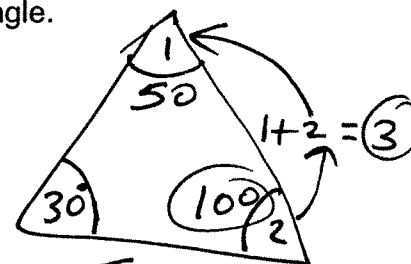
A  $80^\circ$

B  $150^\circ$

C  $75^\circ$

D  $90^\circ$

E  $100^\circ$



$$180 - 30 = 150$$

$$\begin{array}{r} 50 \\ 3 \overline{)150} \end{array}$$

For question 5, you have to **write your answers** in the spaces provided in the question.

5

There are three workers. (Worker 1, Worker 2, Worker 3) The table below shows how much the workers were paid, the hours they worked and the amount they were paid per hour. The table has two blank spaces. **Complete the table.**

Worker	Pay	Hours worked	Pay per hour
1	£42	7	£6
2	£63	9	£7
3	£91	13	£7

$$7 \overline{)91} \begin{array}{l} 13 \end{array}$$

$$63 \div 9 = 7$$

Read the **whole** passage carefully, then answer the questions that follow.

### Getting the Perfect Shot

1. The Stirling family was growing more and more <sup>④</sup>restless as the time passed by. Mr.
2. and Mrs. Stirling had wanted a <sup>④</sup>simple photo taken for their family's summer
3. <sup>⑤</sup>newsletter. Ms. Burke, the photographer, was looking carefully through her camera
4. <sup>⑤</sup>but wasn't taking any pictures. "There isn't enough light on Mr. Stirling's moustache," <sup>①</sup>
5. she said to Sophie, her assistant.
  
6. Sophie sighed and nodded her head, moved the lamp an inch to the left, and
7. glanced at the family. The couple's two sons were starting to fidget. <sup>②</sup> Sophie knew
8. that they would soon start to complain. It was time to take the picture.
  
9. "Now Mrs. Stirling's hair looks too frizzy," Ms. Burke <sup>③</sup>proclaimed. "Sophie, please get
10. the <sup>④</sup>styling products." When Sophie returned, she noticed that the boys were giggling
11. and poking each other. Their parents' smiles were drooping under the <sup>④</sup>hot lights.
12. "Oh, now the boys are standing at the wrong angle!" Ms. Burke announced.
  
13. Mr. Stirling's face turned red. His wife looked like she was about to cry. Sophie
14. quickly stepped up to the camera and snapped the picture. "All done!" she said.
15. Everyone looked relieved, except for Ms. Burke.

For these questions you have to **write your answers**, neatly, in the boxes provided.

- 1** Look at lines 1–5. Why was Ms. Burke not taking any photos at the beginning of the passage?

Wasn't enough light on Mr Stirling's moustache.

- 2** Look at lines 6–8. What did Sophie notice about the boys while she was fetching the styling products?

They were starting to fidget.

**3** Which word in lines 9–11 means the same as 'announced'?

proclaimed

**4** Which one part of speech are the following as they appear in the passage?  
restless (line 1), simple (line 2), styling (line 10), hot (line 11)

adjectives

**5** Which part of speech is 'but' as it appears in the passage? (line 4)

conjunction