

Daily 5: Day 37 Name: _____

1

What is 30% of 190?

$$\frac{3}{10}$$

$$190 \div 10 = 19$$

$$\begin{array}{r} 19 \\ \times 3 \\ \hline 57 \end{array}$$

A 63

B 57

C 95

D 30

E 19

2

 A living room measures 4m by 5m.

$$4 \times 5 = 20$$

 Jess buys a new sofa for the room which measures 1m by 2m. $1 \times 2 = 2$

What percentage of the living room floor is taken up by the sofa?

A 10%

B 20%

C 5%

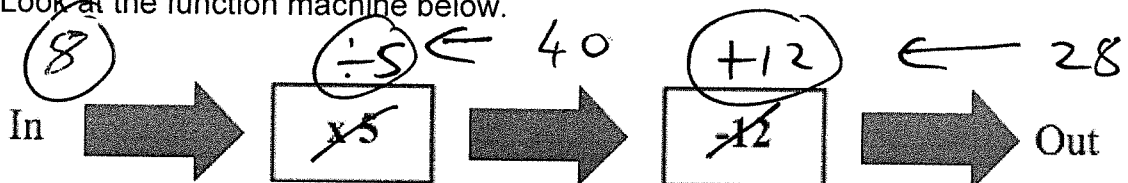
D 2%

E 50%

$$\frac{2}{20} = \frac{10}{100}$$

3

Look at the function machine below.



What number has to go into the function machine for 28 to come out?

A 4

B 16

C 20

D 40

E 8

4

Charlie is watching his favourite box set on TV.

He decides to watch three episodes without any breaks.

The first episode lasts 21 minutes.

The second episode lasts 33 minutes.

The third episode lasts 29 minutes.

He begins watching the first episode at 7:00 pm.

At what time does the third episode finish?

$$\begin{array}{r}
 19:00 \\
 + 1:23 \\
 \hline
 20:23 \\
 + 21 \\
 + 33 \\
 + 29 \\
 \hline
 83 = 1 \text{ hr } 23 \text{ mins}
 \end{array}$$

A 8:33pm

B 8:21pm

C 8:23pm

D 9:23pm

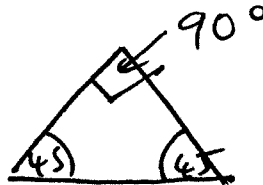
E 8:03pm

For question 5, you must **tick your answers** in the spaces provided in the question.

5

Look at the statements below. Tick the statement if it is true.

- A) ^{two} Three sides of an isosceles triangle are the same length.
- B) The angles in a triangle add up to ~~360°~~ 180°.
- C) The three angles of a scalene triangle are always different.
- D) A right-angle triangle can also be an isosceles triangle.



In this exercise you have to choose the **best** word, or **group of words**, to complete each numbered line so that the passage makes sense and is written in correct English. Choose the best answer and **mark its letter on your answer sheet**.

Grammar Exercise

- 1 The hikers paused at the crossroads, unsure
whether A who B unless C where D beside E the narrow trail would lead.
- 2 Lydia checked her suitcase twice to make sure
anything A nothing B everything C someone D each E had been left behind.
- 3 The coach raised his hand, therefore A suddenly B however C because D although E
signalling that the warm-up was over.
- 4 Sara gripped the railing tightly unless A because B while C although D beyond E
she crossed the icy footbridge.
- 5 The crowd grew most excited A excite B more excited C exciting D excitedly E
as the magician prepared his final trick.