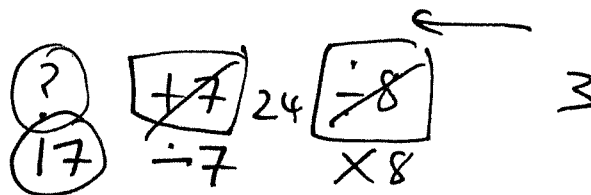


1

Blake thinks of a number.
He adds 7 to it and then divides by 8.
His answer is 3.



What number did Blake think of?

A 24

B 11

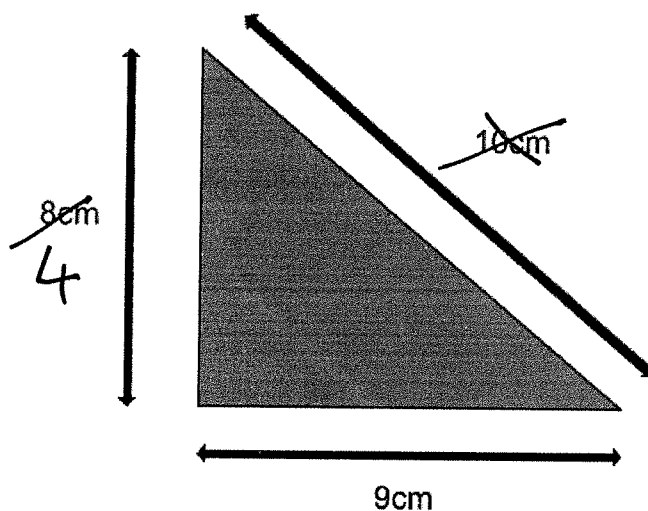
C 8

D 27

E 17

2

Look at the triangle below.



$4 \times 9 = 36$

What is the area of the triangle?

A 72cm^2

B 36cm^2

C 80cm^2

D 45cm^2

E 17cm^2

3

There are 5 bad apples and 15 good apples in a bag.

What fraction of the apples are good?

A $\frac{3}{4}$

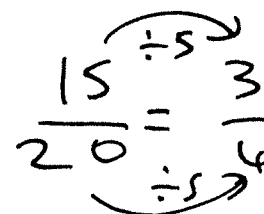
B $\frac{15}{5}$

C $\frac{15}{25}$

D $\frac{5}{20}$

E $\frac{3}{20}$

$5 + 15 = 20$



4

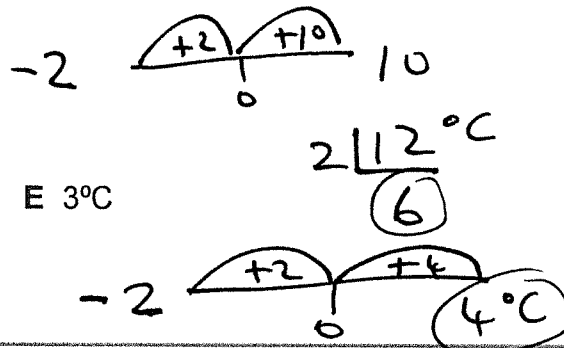
A passenger on a flight leaves Belfast and the temperature is -2°C .

When the passenger lands in Australia the temperature is 10°C .

While flying they passed over Dubai where the temperature was exactly halfway between the temperature in Belfast and Australia.

What is the temperature in Dubai?

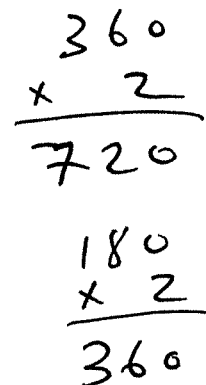
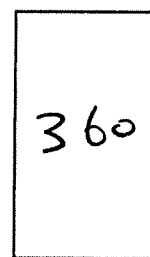
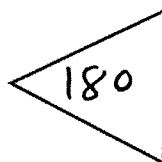
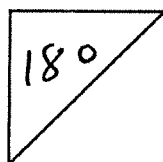
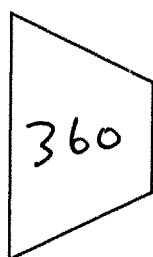
- A 6°C B 8°C C 4°C D -6°C E 3°C



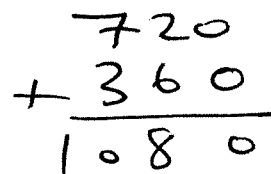
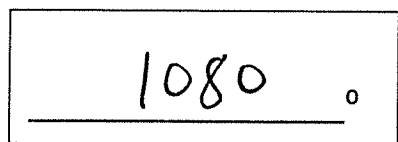
For question 5, you have to **write your answer** in the space provided in the question.

5

Look at the 4 shapes below.



What is the total of all the angles in the two quadrilaterals and in the two triangles?



In this exercise there are some **spelling** mistakes. On each numbered line there is either **one** mistake or **no** mistake. Find the group of words with the mistake in it and mark its letter on your answer sheet. If there is no mistake, mark N.

Spelling Exercise

1 Maya was acheiving her goal of running a mile every day before school.

A B C D

2 The explorer carried a seperate journal to record each discovery he made in the jungle.

A B C D

3 Ella tried to stay consciouss during the long movie, but she eventually fell asleep.

A B C D

4 The scientist performed the experiment accurately, carefully measuring every result.

A B C D N

5 Oliver enjoyed the convenience of having a shop right beside his house.

A B C D