

1

Charlie has 180 homework questions to complete.
It will take him 9 seconds to do each question.

$$\begin{array}{r} 7 \\ 180 \\ + 9 \\ \hline 1620 \end{array}$$

How long in minutes will it take Charlie to complete all his homework?

A 27

B 18

C 30

D 24

E 20

$$\begin{array}{r} 027 \\ 60 \overline{) 1620} \\ \underline{120} \\ 420 \\ \underline{420} \\ 0 \end{array}$$

2

In normal circumstances 325 pupils attend Dan's school. There is a snow blizzard and $\frac{2}{5}$ of the pupils cannot make it in.

How many pupils make it into school?

$$\frac{3}{5} \text{ of } 325$$

A 195

B 130

C 210

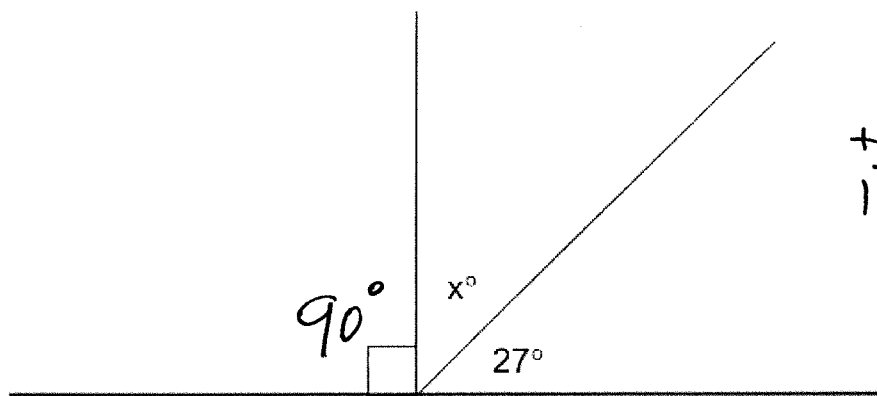
D 260

E 165

$$\begin{array}{r} 065 \\ 5 \overline{) 325} \\ \underline{300} \\ 25 \\ \underline{25} \\ 0 \end{array}$$

3

Look at the straight line below.



What is the size of angle x ?

A 63° B 117° C 47° D 73° E 57°

$$\begin{array}{r} 90 \\ + 27 \\ \hline 117 \end{array}$$

$$\begin{array}{r} 7 \\ 180 \\ - 117 \\ \hline 63 \end{array}$$

4

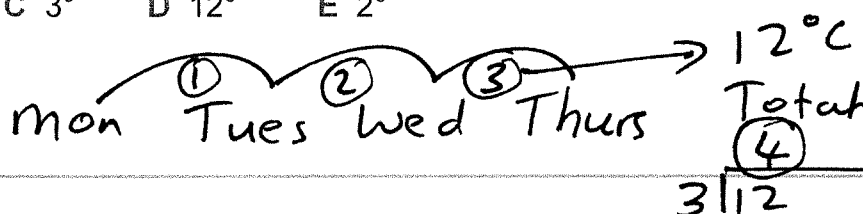
It is Monday in Comber and the temperature is 10°C.

The temperature drops to -2°C on Thursday.

By how many degrees on average did the temperature drop each day over the three days?

- A 4° B 6° C 3° D 12° E 2°

$$-2 \quad \begin{array}{r} +2 \\ +10 \\ \hline 10 \end{array}$$



For question 5, you have to **write your answers** in the spaces provided in the question.

5

Bailey plays rugby and records his scores over six games:

3, 9, 11, 5, 8, 12.

$$\begin{array}{r} 20 \\ 16 \\ +12 \\ \hline 6 \overline{)48} \\ 8 \end{array}$$

- a) What is the mean score over the 6 games?
 b) What is the range of his scores?

$$\begin{array}{r} + \div \\ - \end{array}$$

$$12 - 3 = 9$$

average	8
range	9

In this exercise there are some **spelling** mistakes. On each numbered line there is either **one** mistake or **no** mistake. Find the group of words with the mistake in it and mark its letter on your answer sheet. If there is no mistake, mark N.

Spelling Exercise

- 1 The school trip to the science museum was a necessary part of the curriculum, helping pupils understand the world around them.
- A B C D
- 2 The scientist explained that it was important to separate the liquids carefully before heating them in the laboratory.
- A B C D
- 3 The weather forecast predicted heavy rain for the weekend, but the actual conditions remained dry and pleasant throughout.
- A B C D N
- 4 The coach told the team they would definitely win if they kept their focus and worked together throughout the match.
- A B C D
- 5 Protecting the environment is one of the most important responsibilities we have for the benefit of future generations.
- A B C D