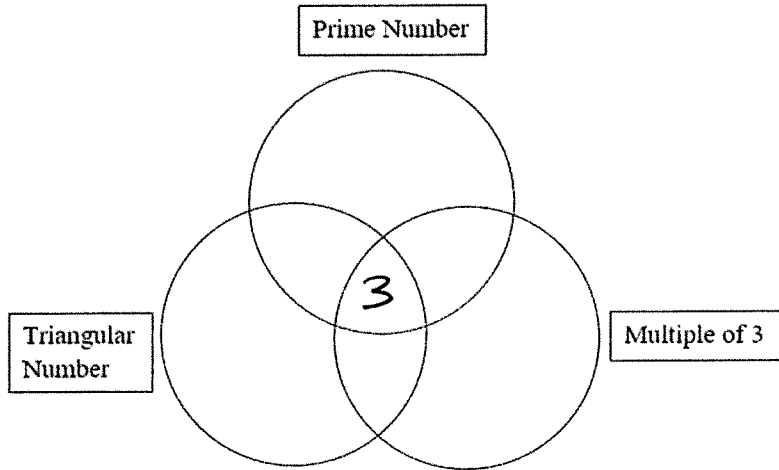


1

Look at the Venn diagram below.



Which number between 1 and 20 could go in the middle section of the Venn diagram?

- A 4    
  B 3    
  C 5    
  D 9    
  E 6

2

Look at the statements below about fractions of a complete turn.

- A.  $\frac{1}{5}$  of a turn is a right angle  $72^\circ \times$   
 B.  $\frac{5}{6}$  of a turn is an obtuse angle  $300^\circ \times$   
 C.  $\frac{5}{8}$  of a turn is a reflex angle  $225^\circ \checkmark$   
 D.  $\frac{1}{5}$  of a turn is an obtuse angle  $72^\circ \times$   
 E.  $\frac{5}{6}$  of a turn is an acute angle  $300^\circ \times$

Which statement is true?

- A A     B B      C C     D D     E E

$$\begin{array}{r}
 072 \\
 5 \overline{) 360} \\
 \underline{360} \\
 0
 \end{array}$$

$$\begin{array}{r}
 60 \times 5 = 300 \\
 6 \overline{) 360} \\
 \underline{360} \\
 0
 \end{array}$$

$$\begin{array}{r}
 245 \\
 8 \overline{) 360} \\
 \underline{320} \\
 40 \\
 \underline{40} \\
 0
 \end{array}$$

3

A student spent one sixth of an hour doing English homework, three fifths of an hour doing maths homework, and three quarters of an hour doing science homework.

How many hours and minutes did they spend altogether?

- A 1hr 21mins    
  B 1hr 25mins    
  C 1hr 20mins    
 D 1hr 31mins    
 E 1hr 45mins

$$\begin{array}{r}
 1 \\
 45 \\
 + 36 \\
 \hline
 91 \\
 - 60 \\
 \hline
 31
 \end{array}$$

1hr 31mins

$$\frac{1}{6} \text{ of } 60 = 10$$

$$\frac{3}{5} \text{ of } 60 = 36$$

$$\frac{3}{4} \text{ of } 60 = 45$$

$$\frac{3}{5} \text{ of } 60 = 12 \times 3 = 36$$

$$\frac{3}{4} \text{ of } 60 = 15 \times 3 = 45$$

4

Look at the four rules below.

✓ Rule A: Subtract 2 then multiply by 3.

✗ Rule B: Add 6 to the previous number.

✗ Rule C: Subtract 2 from the previous number.

✗ Rule D: Multiply by 3 then add 4.

$$4 - 2 = 2 \times 3 = 6 - 2 = 4 \times 3 = 12$$

Which rule matches the sequence 4, 6, 12, 30...?

A Rule A and D

B Rule B

C Rule C

D Rule D

E Rules A

For question 5, you have to draw your answer on the grid provided.

5

Look at the grid below. It is made up of small squares. The side of each small square is 1cm long.

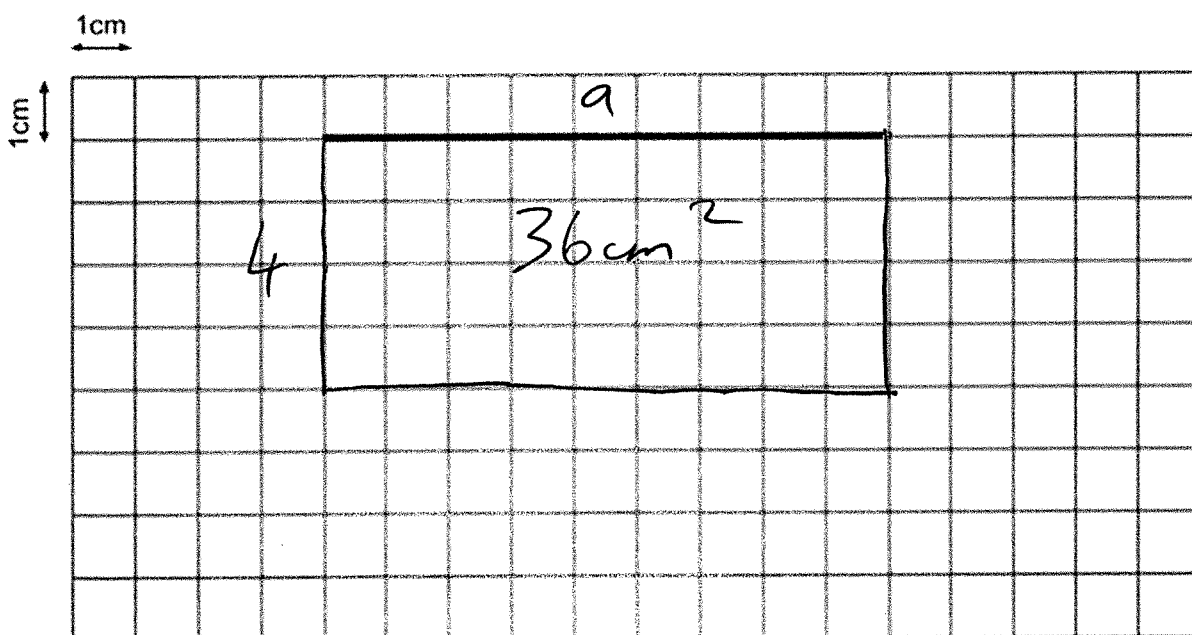
A line of length 9cm is drawn on the grid.

This line is one side of a rectangle of area  $36\text{cm}^2$ .

$$\underline{4} \times 9 = 36$$

Draw the other three sides of the rectangle in the grid.

Draw your lines clearly and accurately.



Read the **whole** passage carefully, then answer the questions that follow.

### Disturbing the Peace

1. It was a beautiful spring morning down at Ballyholme Beach. Birds chirped and the wind sang
2. in the chilly morning breeze. Gentle waves moved elegantly along the surface of the clear
3. blue water. Gemma sat on the pier with her geography book in her lap, occasionally looking
4. out at the peaceful waves moving back and forth.
5. Suddenly, running footsteps came from behind and a voice shouted, "Kowabunga!" Before
6. Gemma could move an inch, her best friend Izzy flew directly over her head. Izzy was
7. shrieking with laughter as she dove into the water. The cold water splashed all over Gemma
8. and soaked her to the skin!
9. As Izzy swam back to the pier, Gemma was wiping her face. "You said you'd never do that
10. again!" Gemma declared, with a scowl on her face.
11. Izzy raked the hair out of her eyes and shrugged. "I said I wouldn't splash you at the pool,
12. Gem. We're at a beach now. And, come on, how much studying do you need to do on this
13. trip? You've been reading all morning." Izzy splashed the water playfully. "Come on, jump in!
14. The water's great."
15. Gemma sighed and closed her book. She would have to learn about mountain and valley
16. formation another day. The cool spring air was giving way to the summer sun. And besides,
17. her best friend was just begging to be beaten in a race across the shore to the nearest buoy!

For these questions you have to **write your answers**, neatly, in the boxes provided.

- 1** Look at lines 1–4. What two details show that the morning at Ballyholme was calm and peaceful?

Birds chirped, wind sang, gentle waves

- 2** Look at lines 5–8. How does Gemma react when Izzy jumps over her? Give two details.

Wiped her face, scowled.

- 3 Look at lines 9–10. Which word in these lines shows that Gemma is unhappy?

faked

- 4 Which one part of speech are the following words as they appear in the passage? **elegantly** (line 2), **occasionally** (line 3), **playfully** (line 13), **directly** (line 6)

adverbs

- 5 Which part of speech is 'waves' as it appears in the passage? (line 4)

noun