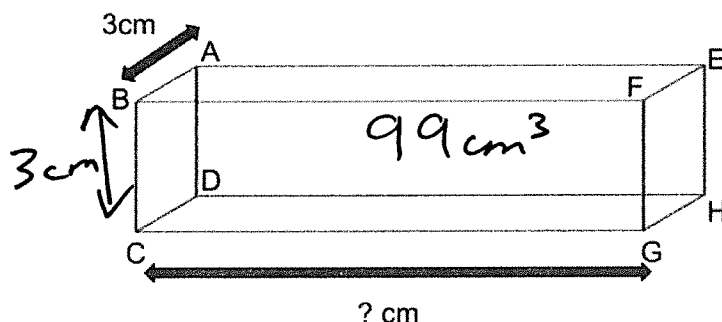


1

Look at the cuboid below.



$$\begin{array}{r} 11 \\ 3 \overline{) 33} \\ \underline{33} \\ 0 \end{array}$$

ABCD is a square with each side measuring 3cm. The volume of a cuboid with ABCD as its base is  $99\text{cm}^3$ .

What is the length of line CG?

- A 9cm    **B 11cm**    C 33cm    D 3cm    E 7cm

2

Which of the following correctly shows “seven and three quarters” as a decimal?

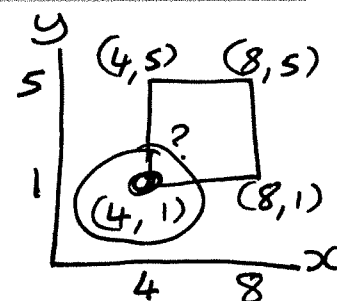
$$\begin{array}{r} \downarrow \\ 7 \end{array} + \begin{array}{r} \downarrow \\ 0.75 \end{array} = 7.75$$

- A 7.34    **B 7.75**    C 7.3    D 7.8    E 7.25

3

Three vertices of a square are at (4, 5), (8, 1) and (8, 5).

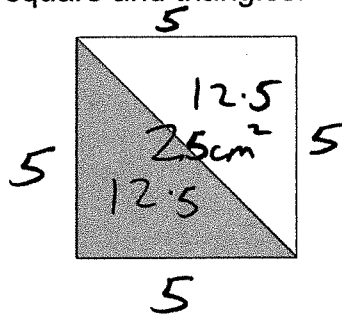
What are the coordinates of the 4th vertex?



- A (4, 8)    B (1, 4)    **C (4, 1)**    D (5, 4)    E (8, 8)

4

Look at the shape below.  
It is made up of a square and triangles.



$$\begin{array}{r} 12.5 \\ + 12.5 \\ \hline 25.0 \end{array}$$

The area of the shaded part is  $12.5\text{cm}^2$ .

$$5 \times 4 = 20$$

What is the perimeter of the square?

A 12.5cm

B 25cm

C 50cm

**D 20cm**

E 10cm

For question 5, you have to **write your answers** on the probability line below.

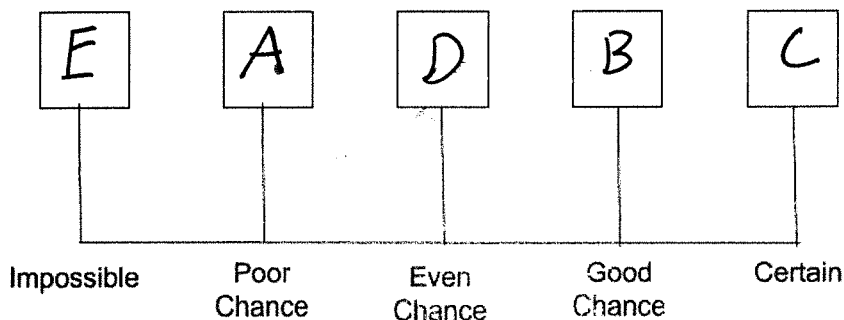
5

Look at the 6 number cards below.



The cards are placed in a box and shaken. A card is chosen at random. Place letters A–E on the probability line to show how likely each event is.

- ② A: The number is a square number 1, 4
- ⑤ B: The number is 5 or less 1, 2, 3, 4, 5
- ⑥ C: The number is a multiple of 1 1, 2, 3, 4, 5, 6
- ③ D: The number is a triangular number 1, 3, 6
- ① E: The number is a negative number 0





**3** What does Phil's description of the sculpture tell us about him?

- A He is embarrassed about building it
- B He wishes he had built something different
- C He is proud of his creation and its history
- D He is angry that fewer people visit now
- E He is planning to repaint it

**4** How does Sasha's mum react when she first sees the sculpture?

- A She is delighted and takes a photograph
- B She drives away immediately
- C She is unsure what to think of it
- D She recognises it from a history book
- E She asks Sasha to draw it

**5** What does the last paragraph suggest about Sasha's mum?

- A She dislikes pecan pie
- B She is in a hurry to leave
- C She decides to be kind and accept Phil's invitation
- D She is still nervous about the sculpture
- E She sends Sasha inside alone